

Winter Summit 2019

Shehaqua Family Camp



Shehaqua Family
Faith. Family. Friendships. Fun.

Summit Purpose

- Need your help to keep camp going strong!
- Talk about how to adjust and evolve with changing demographics of members
- Decide how to handle Spring Gathering and Harvest Festival
- Bring up the open volunteer roles

**Our mission is to build
an authentic community
where families can experience
God's heart through self-discovery,
principled relationships,
and the purity of nature.**

Today's Schedule

8:30am - 9:30am - Breakfast

9:30am - 10:00am - Introduction and Welcome

10:00am - 10:15 - Icebreakers

10:15am - 11:00am - Pair Share & Group Discussion

11:00am - 12:00pm - Education

- Overview of how camp is run
- How Programs get run year-round
- Resources - Shehaqua Guidebook
- Open positions

Noon - 1:00pm - Lunch

1:00 - 2:30pm - Brainstorming - Improving Family Camp

2:30 - 3:00 - 30min break

3:00pm - 4:00pm - Holding the Spring and Fall programs Discussion

4:00pm - 4:45pm - Ideas for the 25th Anniversary of Camp

4:45pm - 5pm - Closing

5:00 - 6:00pm - Dinner

6:00pm - Head to Penn's Landing for Ice Skating!



Icebreakers (Naomi)

Speed round introductions:

Name and a fun fact this group might not know?

Quick game: Get in line

Pair Share

Reflection/ Discussion Questions

What is your favorite memory of Camp Shehaqua/any Shehaqua related programs?

What does Camp Shehaqua mean to you?

What parts of the Camp Shehaqua programs work?

What doesn't work?

What would you like to see for the future of Camp Shehaqua/ other programs?

Group Discussion

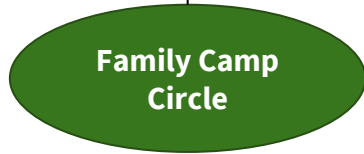
Overview - How Camp is run



2-year elected term, create policies for camp programs and set direction of organization



Made up of representatives from each circle. Oversees all circles, make sure key to-dos get done, manage logistical issues such as storage, T-shirts, mugs, etc.



Program Circles

- Identify and appoint qualified directors for each program
- Check in on and Support program directors

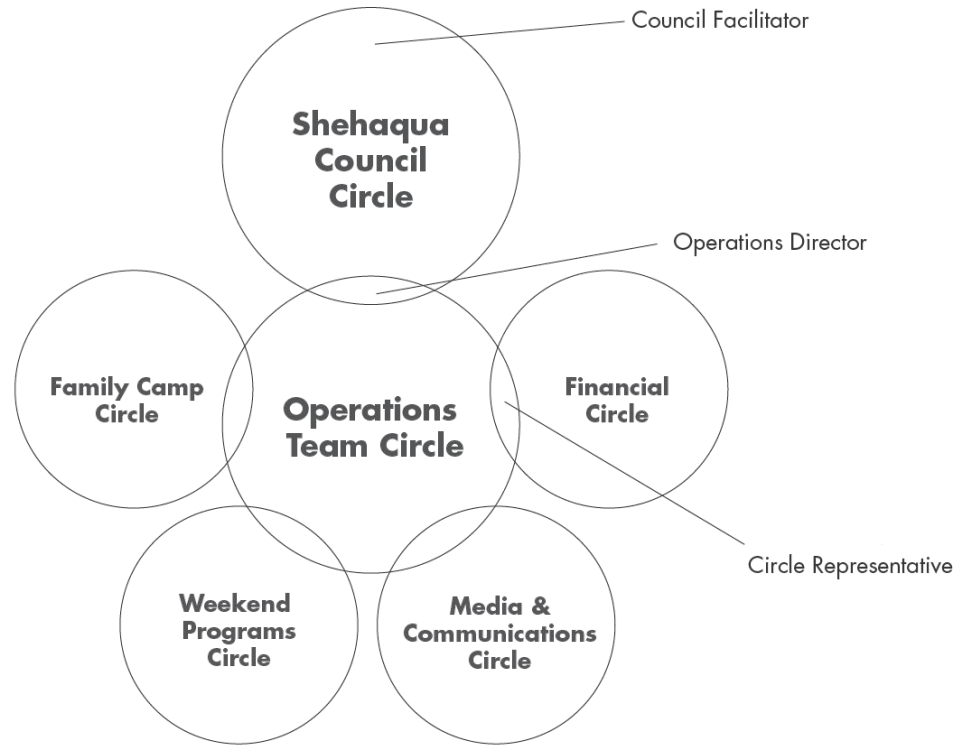


Year-Round Circles

- Financial - create and maintain budgets, reimbursements, etc.
- Media - manage and write newsletter, facebook posts, run T-Shirt contest



Sociocracy Model - Overlaps



Members of the Shehaqua Family (anyone who ever attended a Shehaqua program) are encouraged to join circles of their interest. Members of the Shehaqua Family elect Shehaqua Council Circle members.

Current Year-Round Members

Council

Mike Stewart - Chairperson
Igraine Convery - Administrator
Haydee Ching
Claude Aubert (retiring)
Denthew Learey
Irina Schneider
Sunkwon Bush
Chris Bush
Felicitas Moyer

Operations

Sunkwon Bush - Facilitator
Kyra Moyer - Administrator
Naomi Bush
Haydee Ching
Chris Bush

Family Camp

Sunkwon Bush - Facilitator
Daniel Kingsley - Administrator
Abe Deshotel - Scribe
Laura Herbers
Sally Sayre
Claude Aubert
Haydee Ching

Financial

Haydee Ching

Media & Communications

Naomi Bush
Yeol-Shim Bell

Weekend Programs

Kyra Moyer

Open Seats!

Yearly To-Dos Overview

January to March

- Finalize budgets for the year
- Send in rental application dates for all programs for the year (early Feb at latest)
- Confirm most directors for events (preferably before application is sent)
- Prepare for Spring Gathering

April to June

- Council holds annual Spring summit
- Spring Gathering
- Support Camp
- Directors in preparing for camp
- Kick off meetings with directors of each camp

July to September

- Hold Family Camp
- Collect reflections and feedback to improve on the next year
- Celebrate the Harvest Festival

October - December

- Determine sign-up process for directors
- Start looking for next year's camp directors
- Find time to hold & Plan a summit

Shehaqua Guidebook

A go-to resource on all policies and procedures for running Family Camp including volunteer roles, camp rules, yearly schedules, etc.

<https://www.shehaquafamily.org/wiki/>

Open Roles

Year-Round

Operations Coordinator

Weekend Circle members

Council Member

Media & Communications

Programs

Family Camp (Co-)Director - Weekend

Family Camp (Co-)Director Week 2

Cooks - Family Camp

Spring Gathering Director

Harvest Festival Director

Operations Coordinator Description

- 2-year Term, member of both Council and Operations Team
- Works closely with Operations Team Facilitator + Administrator to ensure that regular meetings will be held, all important issues will be discussed, and policies set by the Council will be enacted.
- Directs the work getting done, holds everybody accountable, makes sure all circles are doing their piece of the job to prepare for the programs. Examples include:
 - Works with all program circles to make sure the search for program directors is on track
 - Connects to program directors once they have been identified and ensures they are getting the support they need from the different circles
 - Make sure program directors and circles communicate
- Reports to Shehaqua Council regularly about the activities of the Operations Team, and immediately if any problems or special situation come up. Propose policies as needed to improve running of programs
- Cooperate with Shehaqua Council to organize governance review and program review meetings such as the Shehaqua Summit.

Council Member Responsibilities?

Criteria for candidates

- Must have attended at least two Shehaqua Family programs in the last three years, have demonstrated responsibility at Shehaqua Family programs (for example helped with a volunteer assignment at camp or as a member of a circle), must be 17 years old or older, and have a sincere desire to serve the Shehaqua Family.
- Only one per person per family per generation can serve on the Council at the same time. (For example, a father and daughter is fine; a married couple is not.)

Council Member Duties

- Each council member serves 2 years. After 2 years, members can choose to stay on another term or open their seat up for election.
- Attend a bi-monthly via Zoom call a one day in-person summit meeting in spring.
- Work with the council to shape the policies of Pocono Family Ministries and Shehaqua Family Camp
- Work with the council to Appoint an operations director/coordinator to serve on both the Council and Operations Team

Q&A

Lunch Time!

Brainstorm - How to Improve our Programs for today's members

What works well?

What could be better?

Ideas for the future

Topics for Brainstorm

Family Camp

- Is it still fulfilling its core mission? How does that mission adapt to the needs of today's members?

Weekend Programs (Fall Fest and Spring Gathering)

- What can we do better? Does it need to change?

Volunteering

- How do we keep up with having enough volunteers at camp and year-round?
- What is a sustainable amount of work for attendees to still feel like they are enjoying themselves?

Ideas for the future

- Proposal - Memorial web page on Camp Shehaqua site to honor past contributors in the next world
- How do we also appeal to new guests outside our faith? Or to former members who have left?

Blue Sky - What would you love to do if the time, money, resources were available?

Discussion - What did we write?

30 minute break

Spring Gathering & Harvest Festival Discussion

Question: Based on low attendance and lack of staffing, does it still make sense to hold Spring Gathering and Fall Fest this year?

Attendance Numbers Last Year

Spring Gathering -27 people

- Conflict with other youth events

Harvest Festival - 39 registered, ~50 people including visitors

- Did not have enough attendees register in time to cover a band (needed 60, willing to flex to 50)
- If everyone who had come had paid for a full registration, we were closer to paying for the band but still fell short.

Spring Gathering & Harvest Festival Discussion

Spring Gathering

Reasons to keep

- History of being a fun event for youth and young adults

Challenges

- Lack of a consistent theme and purpose, depends on director
- Competition with other programs at that time, fewer youth to come locally

What could change?

- More focus on adventure?
- More activities for adults or families?
- Possible Spring Summit instead?

Harvest Festival

Reasons to keep

- Great event for the whole family
- Square dancing is popular
- Consistent theme and purpose

Challenges

- Shortly after Family Camp
- Early advertising + prepared director is crucial
- Sometimes conflicts with broader church events

What could change?

- Director in place far in advance
- Advertise early - FB, announce at Family Camp
- Emphasize need to register even for day

Spring Gathering & Harvest Festival Discussion

What we need to hold each program:

- A Director willing to run it
- A compelling theme to draw attendees
- A registrar
- Advertising far enough in advance

Open discussion

It's the 25th Anniversary of Camp! Ideas?

How do we want to celebrate?

(Special events? Trips down memory lane? An even bigger fruit tower???)

What are some ways to commemorate this special year?

Special T-Shirts? Special-Edition Mugs? Badges?

What else?

Thank You!

**Time for dinner +
ice skating!!**

